

GENERAL INFORMATION

This product is designed for internal use on rendered and plastered walls and ceilings including those panelled with MDF or plasterboard.

- **Ready Mixed, Ready to Use**
- **Easy to Apply, Easy to Sand**
- **Superior Surface Finish**
- **Can be Sealed & Painted**
- **Can be Drilled & Plugged**
- **Clean up with Water**
- **Long Storage Life with Resealable Airtight Stopper**
- **Contains 80ml**
- **Patented Built-in Spreader**



"Fill and Sand Solutions"

DISPLAYS & LEAFLETS AVAILABLE



MULTI PURPOSE SANDERS & TOOLS



PATENTED INTERCHANGEABLE HANDLE SYSTEM



WEBSITE : www.national-abrasives.co.uk
 EMAIL : sales@national-abrasives.co.uk
 TELEPHONE : +44 (0)1737 242593
 FAX : +44 (0)1737 234720
 ADDRESS : 54 Albert Road North
 Industrial Estate
 Reigate, Surrey
 RH2 9EL
 United Kingdom

INTRODUCING
THE NEW

Mini Fill™ HOLE AND CRACK FILLER



FROM



"Fill and Sand Solutions"



• Built-in spreader

• Easy to apply, easy to sand • Superior finish

Mini Fill™ HOLE AND CRACK FILLER

FOR HOLES & CRACKS IN PLASTER AND DRYWALL
READY MIXED • EASY TO APPLY, SAND AND FINISH



FILLS HOLES AND CRACKS

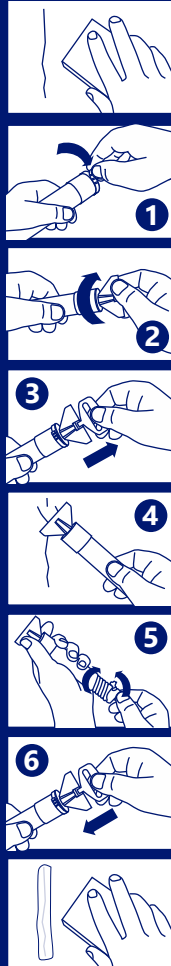


WATER WASHABLE



INSTRUCTIONS

(Please read the Health & Safety)



PREPARATION. Sand down the area and remove any dust.

1. Remove the strip around the tool head.

2. Screw in cap to puncture tube.

3. Pull out stopper.

4. Squeeze and spread. Always overfill the area or hole and allow to dry.

5. Twist and fold up tube as you work.

6. When finished, clean with water and use stopper to reseal.

7. Sand down using grit P120 to P240 for a smoother finish.

HEALTH & SAFETY

It is the responsibility of the user to undertake a risk assessment of what precautions will be required. These guidelines are designed to help in part.



• Always wear full protection when sanding any surface and cleaning up including a Dust mask (Minimum FFP2), Ear defenders, Eye protection and Gloves.



• Always unplug power tools before attaching abrasives.

• When sanding old painted surfaces and some modern enamels these may contain harmful lead. Clear away thoroughly and do not ingest.



• Keep away from children.

• Material Safety Data Sheet available from our website. www.national-abrasives.co.uk

DRYING TIMES

Drying times may vary.

Guidelines :

- 15 - 30 minutes for hairline cracks & blemishes
- 1 - 2 hours depending on depth for normal use
- Up to 12 hours for deep fill

PATENTED SYSTEM & TOOL

"Fill and Sand Solutions"