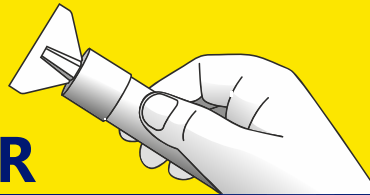


INTRODUCING THE NEW

"Fill and Sand Solutions"

Mini Fill™ HOLE AND CRACK FILLER



READY MIXED • READY TO USE • EASY TO APPLY, SAND AND FINISH

FILLS HOLES & CRACKS IN PLASTER AND DRYWALL



- Patented Built-in Spreader
- Ready Mixed, Ready to Use
- Easy to Apply, Easy to Sand
- Can be Sealed & Painted
- Can be Drilled & Plugged
- Clean up with Water
- Resealable with Airtight Stopper
- Drying times :
 - Up to 30 mins for hairline cracks & blemishes
 - 1 - 2 hours depending on depth for normal use
 - Up to 12 hours for deep fill
- Available from October 2017
- Download leaflets from our website

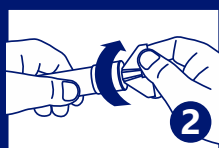


Actual Size (~23cm) • 80ml • Patented Tool & System

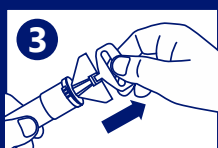
GYPSUM-BASED DRYWALL JOINT COMPOUND • DRIES HARD LIKE PLASTER



REMOVE STRIP



SCREW IN CAP TO PUNCTURE TUBE



PULL OUT STOPPER



SQUEEZE AND SPREAD



TWIST AND FOLD UP TUBE AS YOU WORK



CLEAN WITH WATER AND USE STOPPER TO RESEAL